



Dermacol

Dermacol Cosmetics

Import Cosmetics - Sales and Distribution

FHU "LIW" PL 6372082138

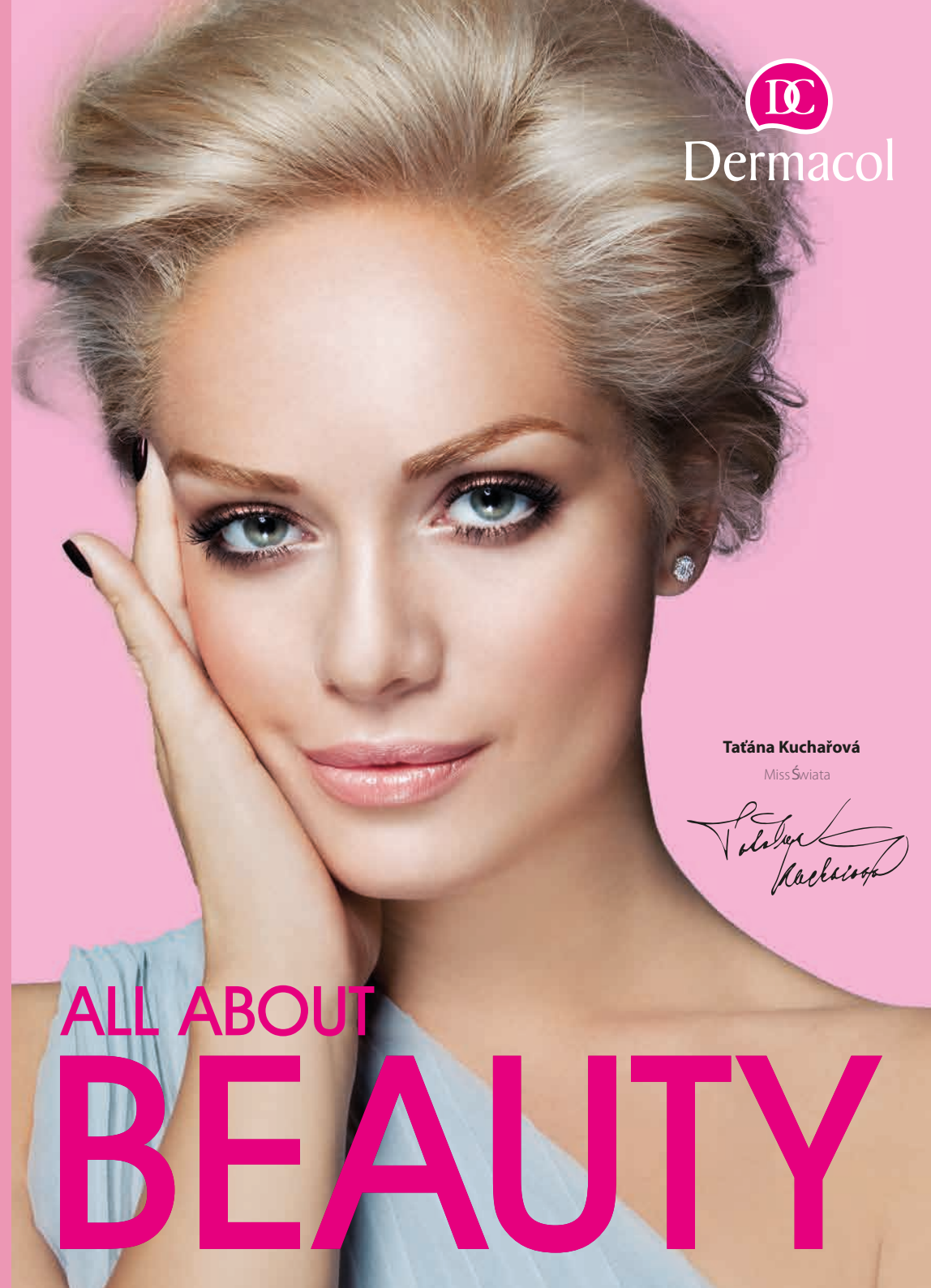
tel + 48 500 777 310

contact@fantastic-makeup.com

www.fantastic-makeup.com
Poland



2015



Taťána Kuchařová

Miss Świata

Taťána Kuchařová

ALL ABOUT
BEAUTY



DERMACOL HISTORY

DERMACOL cosmetics got its start in the Barrandov Film Studios in Prague in the early 1960s. Soon, film studio experts teamed with dermatologists from the Medical Cosmetics Institute in Prague. From the very beginning, the joint efforts of cosmetic specialists, who based their trade on medical principles, and film make-up experts were very successful. **DERMACOL Make-up Cover** was created as the first foundation of its kind in Europe and one of the first in the world. The license for this foundation was eventually sold to Hollywood in 1969.

DERMACOL complies with strict quality requirements stemming from the latest cosmetology research. **DERMACOL** clinical trials are carried out under the close supervision of the National Institute of Public Health in Prague in line with the European Union's legislative requirements. Final Dermacol products are not tested on animals.

DERMACOL = QUALITY INGREDIENTS

DERMACOL is a quality minded company and its high-quality products contain many active ingredients. All DERMACOL products are **DERMATOLOGICALLY TESTED** and most of our skin and body care products are **HYPOALLERGENIC**.



The vitality and radiance of
PEARLS



The effective power of
SEAWEED



The royal origin of the mysterious
SAPPHIRE



The luxury and scarcity of
CAVIAR



The antiseptic and healing effects of Australian
TEA TREE OIL

DERMACOL'S PHILOSOPHY

Dermacol provides perfect care for all skin types and can handle all of your skin problems, whether your skin is young, mature, normal, dry or problematic.

*We help our consumers
to feel and look better.*

For more information:
www.dermacol.cz
www.dermacolcosmetics.com

Catalog *content*

DECORATIVE COSMETICS

Make-up bases	4
Foundations	6
Powders & Blushers	10
Eyeshadows & Eyeliners	12
Mascaras	16
Black sensation	18
Lipsticks & Lip glosses	20

SKIN CARE

Dermacol Whitening	22
BT CELL	24
Hyaluron Therapy	26
Pearl Elixir 30+	28
Saphir Elixir 40+	30
Gold Elixir 50+	32
Problematic Skin	34
Detox & Defence	38
Dry Skin	39
Normal & Mixed Skin	40
Sensitive Skin	42
Hydration	44
Young Skin Care & Special Care	46
Lift & Matt	47

BODY CARE

ENJA anti-stretch mark	48
ENJA slimming & anti-cellulite	50
ENJA firming	52
Aroma Ritual	54
Sun care	58
Hand & Foot care, nail polish	62



1st step:
Make-up
base



1. MATT CONTROL MAKE-UP BASE

This long-lasting mattifying make-up base will provide your skin with a perfectly matte appearance and remove all shine for as long as 18 hours. Its light creamy texture makes your skin's surface smooth and fills in lines and pores, thus reducing their visibility and preventing your make-up from caking. It improves your skin's appearance while increasing your make-up's resistance.

**RECOMMENDED
BY THE ASSOCIATION
OF CZECH MAKE-UP ARTISTS.**

1411A, 20 ml

Make-up *base*

will perfectly prepare
your skin for make-up application

- smoothens your skin and fills in fine lines and pores
- prevents the accumulation of make-up
- creates a velvety film on your skin
- enhances the look and durability of make-up

2. SATIN MAKE-UP BASE

This smoothing Satin Make-up Base fills in and erases wrinkles, fine lines and pores and prevents make-up from accumulating in wrinkles. It creates a velvety-soft film on your skin and enhances the look and durability of the make-up.

**2008 AWARD FOR BEST PRODUCT
BY THE ASSOCIATION OF CZECH
MAKE-UP ARTISTS.**

1406A, 10 ml
1405A, 15 ml
1410A, 30 ml

3. PEARL ENERGY MAKE-UP BASE

This smoothing make-up base with pearl extract and pink pigments removes your skin's dusiness and the signs of tired skin, gives it a healthy fresh look and instant radiance. Make-up base smoothes the skin, fills in wrinkles and pores and prevents make-up from accumulating in them.

1408A, 15 ml

4. GOLD ANTI-WRINKLE MAKE-UP BASE

This wrinkle filling and smoothing make-up base with gold glitters and seaweed extracts significantly slows the aging process, improves your skin's elasticity and softness, and adds brightness and vitality. Your skin is visibly rejuvenated and prepared for the application of make-up.

1409A, 15 ml



FOUNDATIONS

DERMACOL
FILMSTUDIO BARRANDOV PRAGUE

MAKE-UP COVER

Legendary high-covering
foundation since 1966



1. DERMACOL MAKE-UP COVER

The legendary high-covering Dermacol Make-up Cover provides perfect coverage for all skin imperfections even in a thin layer. Is the perfect corrector for dark under-eye circles, unpleasant spots and skin blemishes. It may be used on the entire face in order to darken or lighten your skin, ensuring the ideal balance. Widely used as professional make-up for photo or film shoots, modelling and festive occasions.

30g **Hypoallergenic**

SPF 30
WATER RESISTANT
PRESERVATIVE FREE
FOR ALL SKIN TYPES

1107 No. 207	1113B No. 213
1108A No. 208	1115B No. 215
1109A No. 209	1118 No. 218
1110A No. 210	1121A No. 221
1111B No. 211	1122A No. 222
1112B No. 212	1123A No. 223
	1124A No. 224

2nd step:
Foundation

The cornerstone of a polished look is a foundation that covers all skin imperfections, evens the skin tone and gives a neat appearance.

Properly selected make-up will provide your skin with everything it needs:

*beauty and protection
from the outside,
self-confidence and energy
from the inside.*

High-covering foundations



2. 24h CONTROL MAKE-UP

This long-lasting make-up with coenzyme Q10 protects your skin, increases its elasticity and firmness.

**RECOMMENDED BY THE
ASSOCIATION OF CZECH
MAKE-UP ARTISTS.**

30ml

3. ULTIMATE LIFTING & SHIELD MAKE-UP

This lifting make-up with a concentrated anti-wrinkle formula perfectly evens your skin tone and provides flawless appearance. It smoothes and refines lines in your face, reduces wrinkles and prevents their formation and increases your skin's firmness and elasticity. With SPF 30.

30ml

4. CAVIAR LONG-STAY MAKE-UP & CORRECTOR

This long-lasting make-up and perfecting corrector with caviar extracts minimizes the signs of aging, improves skin's hydration and promotes a smooth look. 30ml

RECOMMENDED BY THE ASSOCIATION OF CZECH MAKE-UP ARTISTS.

30ml

Medium-covering foundations



1. ACNECOVER MAKE-UP & CORRECTOR

This make-up for problematic skin with perfecting corrector unifies the complexion and evens color imperfections. Thanks to Tea Tree Oil and Zincidone®, it has anti-bacterial and anti-septic effects, it doesn't clog the pores and reduces the sebum formation.

30 ml

2. TRUFFLE MOISTURIZING MAKE-UP

This moisturizing make-up creates a „naked“, flawless appearance and keeps the ideal moisture level in your skin. The light creamy formula with medium-coverage immediately blends with your skin and evens its tone. With SPF 10.

30 ml

3. MATT CONTROL MAKE-UP

This long-lasting mattifying & waterproof make-up will provide 18-hour shine control while retaining a matte, natural and fresh look for your skin.

RECOMMENDED BY THE ASSOCIATION OF CZECH MAKE-UP ARTISTS.

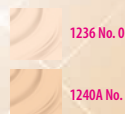
30 ml



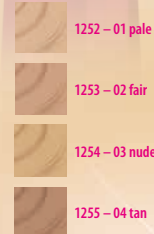
Light-covering foundations



4.



5.



6.



4. PURE GOLD RADIANCE MAKE-UP

This radiance foundation with active gold moisturizes and regenerates your skin and adds brightness and vitality to your skin. It provides a long-lasting mattifying effect.

RECOMMENDED BY THE ASSOCIATION OF CZECH MAKE-UP ARTISTS.

30 ml

5. IMPERIAL MAKE-UP

A moisturizing make-up with royal orchid extract will provide long-lasting moisture for your skin, and evens and brightens your skin.

30 ml

6. TONING CREAM 2in1

The unique combination of moisturizing cream and make-up provides exceptional toning and an unbelievably natural look for your skin.

30 ml

Hypoallergenic

Correctors

Correctors help camouflage minor skin defects (such as dark circles, pigment spots, acne, etc.).

7. MATT CONTROL CORRECTOR

Covering and mattifying concealer completely covers all skin imperfections or dark circles under eyes.

1,1 g

8. CORRECTOR PALETTE

This 4-color corrector is formulated to even your skin tone, cover all skin imperfections and to brighten your look.

8,8 ml



1416

8.

POWDERS

Compact powder adds a matte and polished look to your skin, making your skin's tone even. Carry it with you at all times and apply it over your make-up any time for a

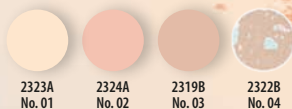
fresh and perfect look!

Application tip: Choose a shade that matches with your foundation or one shade lighter. Use a large brush to apply the powder all over your face. Don't forget about your neck to make the transition between your face and your neck even.

1. MINERAL COMPACT POWDER

The mattifying compact powder prevents your skin from feeling greasy or oily. It perfectly adheres to your skin to ensure a great final effect.

8,5 g



2. COMPACT POWDER WITH LACE RELIEF

Compact powder with decorative lace relief underlines the natural beauty of the face. It is easy to apply and creates a velvety matte finish on your complexion that is soft to touch.

8 g



3rd step:
Powder

NEW

WET & DRY
POWDER FOUNDATION



3. WET & DRY POWDER FOUNDATION

This new powder foundation with an incredibly creamy and soft texture perfectly adheres to the skin and creates a long-lasting fine and matt film on it. It contains Vitamin E and unique silicon components that ensure softness, adherence and the texture's lasting power.

6 g

4. ACNECOVER MATTIFYING POWDER

Mattifying compact powder for problematic skin contains Australian Tea Tree Oil extracts. The powder mattifies and softens your skin and does not clog the pores.

11 g

5. INVISIBLE FIXING POWDER

This light, transparent fixing powder with a brush and a powder puff was formulated to give your skin a velvety appearance. It fixes all types of make-up and protects your skin against the touch.

2007 AWARD FOR BEST PRODUCT BY
THE ASSOCIATION OF CZECH MAKE-UP ARTISTS.

13,5 g



BLUSHER

Nothing will make your look more sparkling and healthier than blusher that brings it all together.

Application tip: Choose a blusher color that complements your eye and lip make-up. Use a larger brush to apply blusher on the upper part of your cheek bones. Use light brush strokes over your face to finalize your look. Using a blusher should always be the last step of your make-up routine.

DUO BLUSHER

This artful duo powder blusher delivers a natural cheek colour and a healthy feel. The strong combination of matte and brightening shades wonderfully shapes your face to perfection.

8,5 g



EYE SHADOWS & EYELINERS



The eyes are an essential element of female beauty. The color of your eyes can be best enhanced by a suitably selected shade of eye shadow and mascara.

Your eyes will be perfectly made up and your lashes will be irresistibly long!

1. MOON TOUCH MOUSSE EYE SHADOW

Luxurious eye shadows with a light and very soft mousse texture. Sparkly particles create a gorgeous reflection on your eyelids. It glides easily and perfectly adheres to your eyelids, leaving you with a long-lasting effect all day.

4,9 g

2. PEARLY LOOSE EYE SHADOW

Trendy shades enriched with a rainbow pearly texture. Thanks to the practical applicator, you can apply it over your entire eye lid or just draw an eye line.

2,2 g

2.



3. EYE SHADOW BASE

Provides long-term fixation of eye shadows and visibly extends the duration of your perfect eye make-up.

RECOMMENDED BY THE ASSOCIATION OF CZECH MAKE-UP ARTISTS AND STYLISTS.

1415 - 7,5 ml

4. ULTRA BLACK EYELINER

Long-lasting and water-resistant ultra black liquid eyeliner perfectly highlights and contours your eyes.

2,8 ml

5. EYELINER & EYE SHADOW

This wooden 2-in-1 Kajal Eyeliner and eye shadow easily creates a perfect line and by using the foam applicator you can apply it onto your eye lids as eye shadow.

1,6 g

6. SOFT EYEBROW PENCIL

Soft pencils beautifully define and highlight your eyebrow line while coloring it at the same time.

1,6 g

7. MATIC EYELINER

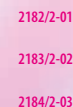
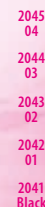
This automatic eyeliner provides a long-lasting effect and high coverage.

0,28 g

8. WATERPROOF EYELINER

Waterproof eyeliner has high coverage and a long-lasting water resistant effect.

1,4 g



Colorful elegance

The color of your eyes can be best enhanced by a suitably selected shade of eye shadow.
Choose the right ones for you from our new collections of eye shadows.



1.

1. MONO EYE SHADOW

A collection of 6 classic shades with a powdery texture provide your eyelids with a full, intense color.

PARABEN-FREE

2,6 g



SATIN EYE SHADOW
a light base shade

MINERAL EYE SHADOW
for shimmering effect

2. DUO EYE SHADOW

Collection of 4 excellently matching color combinations with fine powdery texture perfectly adhere and provide full coverage for all day long.

3g (2 x 1,5g)



2.



3. QUATTRO EYE SHADOW

New Quattro eye shadows with 4 cleverly-matching shades will enhance your natural eye color. The light reflecting pearls immediately make your eyes look brighter.

PARABEN-FREE

5g



3.



4. QUATTRO BAKED EYE SHADOW

The new baked quattro eye shadows with a special wet & dry texture can be used in two ways. WET USE will enhance and intensify the color, while DRY USE will create a soft shade for day make-up.

HYPOALLERGENIC
PARABEN-FREE

5g



4.

MASCARAS

Using a mascara is the base of every day make-up routine of each woman

Choosing the right mascara is very individual and largely depends on the quality of your lashes. You can choose from volumizing, lengthening or curling mascaras. Usually you have to try on several types before you can determine the best one for you.



1. LASH BOOSTER MASCARA BASE

Volumizing and lengthening mascara base immediately maximizes and enhances the effects of your mascara. Apply onto your eyelashes before applying your mascara.

2216, 9 ml

2. VOLUME MANIA MASCARA

This absolutely black mascara has an ergonomically shaped brush to help create **magnificent eyelash volume**.

2229A black, 10 ml

3. VOLUME MANIA WATERPROOF MASCARA

Water-resistant and an absolute black mascara for extremely long-lasting wear and volume of eyelashes.

2225 black, 9 ml

4. MEGA LASHES MASCARA

This mascara adds super volume with panoramic effects to your eyelashes. The volumizing brush precisely separates them from each other. The intensive black pigments add a distinctive colour to your eyelashes.

2109 black, 13 ml

5. 1000 LASHES BUILD UP MASCARA

This mascara adds volume and extra thickness to your eyelashes thanks to the crisscross effects that will make your eyelashes stand out.

2107 black, 12 ml

6. CURL MANIA MASCARA

This extra shaping mascara doubles the length of your lashes, adds great volume, **beautifully curls and lifts the lashes up**.

RECOMMENDED BY THE ASSOCIATION OF CZECH MAKE-UP ARTISTS AND STYLISTS.

2221 black, 11,5 ml

7. NUTRI LASH MASCARA

Nourishing and lengthening mascara for thicker and stronger eyelashes stimulates the renewal of your eyelashes. It adds excellent length, volume and fullness.

2220 black, 8 ml

8. VAMPIRE MASCARA

This lengthening mascara with special brush creates mega long lash effect and provides fantastic separation of your eye lashes.

2217 black, 8 ml

9. OBSESIÓN VOLUME & LENGTH MASCARA

This mascara was inspired by Spanish sensuality for an endless length and volume.

RECOMMENDED BY THE ASSOCIATION OF CZECH MAKE-UP ARTISTS AND STYLISTS.

2238A black, 12 ml

10. IMPERIAL MASCARA

The extraordinary and extremely durable mascara creates **dazzling volume and provides maximum length**. The maxi brush increases the volume of your lashes.

2257 black, 13 ml

11. MAGNUM MASCARA

Mascara for maximum volume and length of eye lashes provides your lashes with an attractive look.

RECOMMENDED BY THE ASSOCIATION OF CZECH MAKE-UP ARTISTS AND STYLISTS.

2246B black, 9 ml

MASCARA BASE

VOLUMIZING

CURLING

LENGTHENING

VOLUMIZING & LENGTHENING



BLACK SENSATION

Get seduced by the black magic...

Intensive *black pigments* provide
a deep intense rich *black color*
and a seductive look for your eyes.



1. **ULTRA BLACK DIPLINER** - Liquid eye liner
2080 - 2,8 ml
2. **GELBLACK** - long-lasting gel eye liner
2097 - 2,5 ml
3. **MATT BLACK** - Matte eye pencil
2076 - 4,3 g
4. **MICRO BLACK** - Eye micro-pencil
2075 - 2,98 g
5. **PRECISE BLACK** - Eye marker
2078 - 1 ml
6. **BAMBI BLACK** - long-lasting eye marker
2098 - 2,7 ml

LIPSTICKS & LIP GLOSSES



Your *make-up* would not be complete without lip make-up
Made-up lips are not only seductive but are also moisturized and protected.

1. LIP GLOSS

Lip glosses come in brilliant shades and will provide your lips with an unbelievable mirror shine. The applicator ensures easy application and the gloss perfectly adheres to your lips without sticking. Let your lips enjoy long-lasting style, fullness and a dazzling shine!

6 ml

2. LONG-LASTING LIPLINER

Soft textured lip contouring pencils provide a long-lasting effect and high coverage.

1,4 g

3. LIP SEDUCTION

Moisturizing lipsticks rich in color pigments will make your lips stand out, providing them with a rich color and high gloss. The high-coverage creamy texture will immediately smooth out your lips, making them velvety soft, while covering them in a protective film.

4,8 g

2813A 01	2820A 08
2814A 02	2821A 09
2815A 03	2822A 10
2816A 04	2823A 11
2818A 06	2862 16
2819A 07	

4. SHIMMERING LIP GLOSS

8 unbelievably fresh and radiant colors for full-looking lips covered in a shimmering gloss. Its light and adhesive texture tones the color of your lips and makes them look juicy and fresh. With a grape scent.

8 ml

5. LONG-LASTING LIPSTICK

This long-lasting creamy lipstick keeps your lips hydrated and moisturized. It perfectly adheres to the lips and stays on them for hours. Lips are colored in a silky and luminous effect.

4,83 g

6. LONGLASTING LIP COLOUR

This double ended Lipstick & Gloss with long-lasting texture provides an intensive color and gloss on your lips. The glossy formulation with natural oils, bee waxes and Vitamin E nourishes and protects your lips.

3 ml + 4,1 ml

2888 01	2889 02	2890 03	2891 04
2892 05	2893 06	2894 07	2895 08



2nd step
INTENSE GLOSS & EXTRA CARE
Apply over lip colour.

1st step
LIP COLOUR
Apply thin film to lips and let it dry 1 minute.



2838 01	2839 02	2840 03	2841 04	2842 05	2843 06
2844 07	2845 08	2846 09	2847 10	2848 11	2849 12



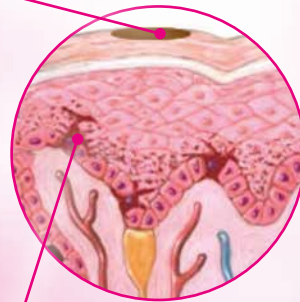
2874 01	2875 02	2876 03	2877 04	2878 05	2879 06
2880 07	2881 08	2882 09	2883 10	2884 11	2886 13

DERMACOL WHITENING



Dermacol *Whitening* line is a complex of active ingredients that acts *very effectively* in **two steps**:

1st step Help to lighten existing pigment spots



2nd step Stop the effects of tyrosinase and inhibit melanin formation



VITAMIN B3 – reduces wrinkles and lines, protects the skin against free radicals, nourishes and evens the skin tone.



BETA ARBUTIN – promotes the formation of collagen and elastin, protects the skin against the physical effects of free radicals, soothes and regenerates the skin.



POMEGRANATE EXTRACT – the concentrated plant extract increases skin density and firmness. Eliminates uneven surfaces and fills in wrinkles. Visibly smoothes and firms the skin.



AQUAXYL – reduces wrinkles and lines, protects the skin against free radicals, nourishes and evens the skin tone.



KOJIC ACID DIPALMATE – promotes the formation of collagen and elastin, protects the skin against the physical effects of free radicals, soothes and regenerates the skin.

1. DERMACOL WHITENING FACE CREAM

Day & night face cream contains active ingredients that inhibit the synthesis of melanin, absorb UV-B rays and stop excessive pigmentation. It accelerates skin whitening and helps to reduce pigment spots.

Use: Apply the cream mornings and evenings onto completely cleansed skin and spread evenly (avoid the area around the eyes). The cream spreads easily and absorbs quickly. To amplify the whitening effect, it is recommended to use Dermacol Whitening Gommage Wash Gel.

E4080, 50 ml

2. DERMACOL WHITENING GOMMAGE WASH GEL

This cleansing gel with micro-pearls is intended for daily cleansing of all skin types. It completely removes any impurities and dead skin cells.

Use: Apply the gel onto wet skin. Massage your skin with circular motions to create a soft lather, then rinse off (avoid the area around the eyes). When used in combination with Dermacol Whitening Face Cream, it amplifies the whitening effect.

E4082, 100ml

3. DERMACOL WHITENING HAND CREAM

Hand cream with whitening effects helps to reduce existing pigment spots, regenerates and provides all-day protection for the exposed skin on your hands against free radicals.

Use: Apply several times per day, preferably each time after you wash your hands.

E4081, 100ml



BT CELL

non-invasive & intensive lifting care



before



after

The **Dermacol BT CELL** line provides *careful treatment* without injections and damaging the skin and muscles. It very effectively addresses the problem of aging skin and wrinkles.

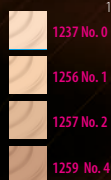
- restores the skin's fullness, density and firmness
- reduces the quantity and size of wrinkles
- smoothes facial wrinkles and expression lines
- effectively prevents the formation of new wrinkles
- your skin looks young and fresh

20% wrinkles are shallower*

36% reduction of surface wrinkles*

70% smoothing of facial wrinkles and fine lines*

* Clinically proven efficiency as early as the next day.



1. ULTIMATE LIFTING & SHIELD MAKE-UP

This lifting make-up with a concentrated anti-wrinkle formula perfectly evens your skin tone, smoothes fine lines and reduces wrinkles. It increases your skin's firmness. With SPF 30. 30 ml

2. BT CELL LIFTING AROMATHERAPY

Refreshing Aromatherapy with lifting effects immediately smoothes out fine lines and visibly reduces the wrinkles. The precious essential oils, especially ylang, patchouli and grapefruit, regenerate and soothe your skin, make it soft to touch.

Use: Apply several drops of oil onto your face and neck and gently massage. Use at night or as needed. PRESERVATIVE-FREE. DERMATOLOGICALLY TESTED. 4170, 15 ml

3. BT CELL INTENSIVE LIFTING & REMODELING CARE

It lifts your skin, smoothes facial expression lines, fills in wrinkles and prevents their formation and restores your skin's structure. **Use:** Apply onto the clean skin of your face, neck and décolletage and onto facial expression wrinkles once to twice per day. Avoid eye contact.

DERMATOLOGICALLY TESTED. FOR ALL SKIN TYPES. 5001, 30 ml

4. BT CELL LIFTING EYE & LIP CREAM

With a concentrated anti-wrinkle complex restores your skin's fullness and eliminates uneven surfaces. It reduces the quantity and size of wrinkles. **Use:** Apply in the morning and evening around your eyes and lips.

DERMATOLOGICALLY TESTED. FRAGRANCE FREE. FOR ALL SKIN TYPES. 4168, 15 ml

5. BT CELL MASK

Unique gel-cream lifting mask very effectively resolves the problem of skin aging and facial wrinkles. It increases the skin's firmness and elasticity, supports cell regeneration, moisturizes and soothes your skin. **Use:** Apply once or twice a week onto your face, neck and décolletage, avoiding eye contact. Leave on for 15 to 20 minutes and then remove with a wet cotton round. 5000, 2x8 g

6. BT CELL INTENSIVE LIFTING CREAM

With a concentrated anti-wrinkle formula with effect similar to application of Botulin. Thanks to the active ingredients contained in the cream, it increases the skin's firmness, restores its suppleness and reduces any unevenness.

Use: Apply in the morning and evening on your well cleaned face and neck, avoiding the area around your eyes. DERMATOLOGICALLY TESTED. 4167, 50 ml



GATULINE EXPRESSION

– concentrated plant extract with effects similar to Botulin. Reduces the frequency of muscle contractions and fine lines and wrinkles. Visibly smoothes and lifts your skin.



ARGIRELINE®

– The unique peptide has a Botox like effect without the need for injections or risk of harm to the skin or muscles.



LEUPHASYL®

– this new peptide, which is comprised of 5 amino acids, perfectly complements and enhances the action of ARGIRELINE.



GATULINE® IN-TENSE

– the concentrated plant extract increases skin density and firmness. Eliminates uneven surfaces and fills in wrinkles. Visibly smoothes and firms the skin.



SEA MAYWEED®

– reduces wrinkles and lines, protects the skin against free radicals, nourishes and evens the skin tone.



SHEA BUTTER

– promotes the formation of collagen and elastin, protects the skin against the physical effects of free radicals, soothes and regenerates the skin.

HT^{3D} HYALURON THERAPY

*Discover the power
of hyaluron therapy!*

30+

This unique remodeling skin care with the wrinkle filling abilities of pure hyaluronic acid with a strong lifting complex fills in wrinkles and restores the 3D structure of your skin. It is a non-invasive and gentle alternative to hyaluronic acid injections.

- improves your skin's firmness by **35%***
- improves the appearance of facial wrinkles by **12%***
- reduces the surface of wrinkles by **36%*** and depth by **20%***

*Test in-vivo



HYALURONIC FILLING SPHERES™ a pure spherical form of dehydrated hyaluronic acid very quickly bonds with water and swells up to 30 times its original size, filling spaces and wrinkles from the inside. Provides long-term moisturizing and prevents water loss from your skin.



GATULINE® IN-TENSE – a concentrated plant extract, a fast-acting and effective firming and lifting ingredient stimulates cell dynamics, remodels your skin's structure and reorganizes collagen fibers in the skin, increases skin's density and firmness and fills in wrinkles.



SHEA BUTTER protects your skin from harmful environmental effects and free radicals, has calming and regenerative effects, makes your skin softer and keeps a stable moisture level.



KALPARIANE an oil extract from brown algae with a high concentration of essential fatty acids (Omega 3 and 6) restores the elasticity of your epidermis and significantly reduces the activity of elastase and collagenase, helping your skin to keep its softness and elasticity.



SPF 15 a combination of UVA and UVB filters protects your skin against the suns and prevents premature skin aging.

1. HYALURON THERAPY WRINKLE FILLER DAY CREAM

with pure spherical hyaluronic acid restores facial contours on a long-term basis, fills in wrinkles and increases collagen and elastin formation in your skin. SPF 15 protects your skin against the sunshine.

Use: Apply in the morning onto the cleansed skin of your face and neck, avoiding the area around your eyes.

4163, 50 ml

2. HYALURON THERAPY WRINKLE FILLER NIGHT CREAM

with pure spherical hyaluronic acid restores the 3D structure and density of your skin, fills in wrinkles and rejuvenates your skin during the night.

Use: Apply in the evening onto the cleansed skin of your face and neck, avoiding the area around your eyes.

4164, 50 ml

3. HYALURON THERAPY EYE & LIP WRINKLE FILLER CREAM

with pure spherical hyaluronic acid fills in wrinkles, rejuvenates and moisturizes the eye area.

Use: Gently tap into the area around your eyes and lips in the morning and evening.

FRAGRANCE-FREE

4165, 15 ml

4. HYALURON THERAPY INTENSIVE HYDRATING MASK

This gel-cream hydrating and remodeling mask with hyaluronic acid makes your skin visibly firmer and fills in wrinkles. It moisturizes, regenerates and nourishes your skin. **Use:** Apply a sufficient amount onto your face, neck and décolletage, avoiding eye contact. Leave on for 15 to 20 minutes and then remove with a wet cotton round. Follow with the Dermacol HYALURON THERAPY 3D Cream. Apply the mask once or twice a week. 5154, 2 x 8 g

5. HYALURON THERAPY 3D REMODELING TINTED FLUID

with pure spherical hyaluronic acid and a strong lifting complex evens your skin tone. It restores the 3D structure of your skin, fills in wrinkles, provides all day moisturizing and refreshes your skin. With SPF 30.

Use: Apply in the morning onto the cleansed skin of your face and neck, avoiding the area around your eyes.

PARABEN-FREE 4166, 50 ml



SPF 30

PEARL ELIXIR

*Reveal the vitality
and radiance of pearls
in your skin!*

30+

At the age of 30, the skin usually still looks beautiful, however the first fine lines start to appear.

PEARL ELIXIR line with its precious pearl extract and coenzyme Q10 hydrates the skin, and provides it with energy and protection against the first signs of aging.

- It brings your skin a youthful look and keeps it firm and supple
- Reduces fine lines and brightens the skin
- Your skin is reborn, smooth, moisturized and protected against the appearance of new lines



PEARL EXTRACT slows down your skin's aging, improves cell metabolism, maintains your skin's moisture level and provides protection from adverse environmental effects.



COENZYME Q10 supports cell activity and skin regeneration and immunity. It helps improve your skin's firmness, elasticity and bonds. Thanks to its intensive encapsulated form, penetrates deep skin layers where it is gradually released and effectively used.



CREATINE reduces the signs of skin aging and fine lines, makes your skin firmer and moisturized.



SHEA BUTTER promotes the formation of collagen and elastin, protects the skin against the physical effects of free radicals, soothes and regenerates the skin.



VITAMIN E has antioxidant effects and protects your skin against damage by free radicals.

1. PEARL ELIXIR MULTI-ACTIVE LIFTING DAY CREAM SPF 10

with a precious pearl extract provides prevention from first lines and supplies the skin with moisture, energy and protection. SPF 10 protects the skin against harmful effects of the sun.

Use: Apply in the mornings on perfectly cleansed skin avoiding the area around eyes. Spread evenly.

4155B, 50 ml

2. PEARL ELIXIR MULTI-ACTIVE LIFTING NIGHT CREAM

with a precious pearl extract provides prevention from first lines and supplies the skin with moisture, energy and protection.

Use: Apply in the evenings on completely cleansed skin avoiding the area around the eyes. Spread evenly.

4156B, 50 ml

3. PEARL ELIXIR MASK

This lifting & brightening mask with precious pearl extract and coenzyme Q10 protects your skin against the formation of first wrinkles while giving it a youthful appearance. It reduces fine lines and brightens your complexion.

Use: Apply in a sufficient layer on the face and neck and leave on for 15-20 minutes. Then remove with a damp cotton ball. Apply once or twice a week as needed. After removing the mask, apply the Pearl Elixir cream.

5141B, 2 x 8 g



SAPHIR ELIXIR

*Find your skin's vitality
in sapphires!*

40+

At the age around 40 years, fine lines turn into real lines, the skin loses its elasticity and fades. Your skin becomes much drier and takes longer to regenerate. **SAPHIR ELIXIR** is a complete revitalizing care line developed specially for mature skin.

- Brings vitality and nutrition
- Deeply restores your skin's structure and intensively smoothes wrinkles
- Strengthens and nourishes

1. SAPHIR ELIXIR INTENSIVE ANTI-WRINKLE DAY CREAM

with the precious mineral Sapphire reduces the appearance of deep wrinkles and protects the skin from negative environmental influences and ensures its hydration.

Use: Apply in the mornings on completely cleansed skin avoiding the area around the eyes. Spread evenly.

4053A, 50 ml

Hypoallergenic

2. SAPHIR ELIXIR INTENSIVE ANTI-WRINKLE NIGHT CREAM

with the precious mineral Sapphire rejuvenates your skin's structure and contributes to intensive strengthening and firmness of your skin overnight.

Use: Apply in the evening on completely cleansed skin avoiding the area around the eyes. Spread evenly.

4054A, 50 ml

Hypoallergenic

3. ELIXIR MICELLAR LOTION

The Elixir Micellar Lotion gently cleanses your skin and removes make-up from your face, eyes and lips in just one step without the necessity to excessively rub your skin. It efficiently removes make-up, including waterproof make-up, and any impurities.

Use: Apply in the morning and evening using a cotton pad. First remove make-up from your eyes, then from the rest of your face. Finally, do not forget about your neck and décolleté. Do not rinse. The skin is ready for a cream application.

4078A, 200 ml



SAPHIRE ultra-fine micro-particles of the most beautiful and precious mineral in the world; it revitalizes and regenerates your tired skin. It has the ability to lead, transform and enhance energy flow in skin cells.



KALPARIANE a brown seaweed extract with a high content of Omega 3 and 6 fatty acids reduces the effects of elastase and collagenase, thus helping to maintain your skin's firmness and suppleness.



SEA MAYWEED® reduces wrinkles and lines, protects skin from free radicals, nourishes and evens your skin tone.



SHEA BUTTER promotes the formation of collagen and elastin, protects the skin against the physical effects of free radicals, soothes and regenerates the skin.



VITAMIN E has antioxidant effects and protects your skin against damage by free radicals.

GOLD ELIXIR

Even with age, you can ensure your beauty!

50+

As time advances, the skin loses its elasticity and facial features lose their firmness and start to change. Mature skin needs rejuvenating deep care that will nourish the skin. **GOLD ELIXIR line with caviar extract**

- Ensures in-depth regeneration and nourishment
- Reduces deep wrinkles and slows down the aging process
- Firms the skin and increases its elasticity

Recommended by
the famous Czech actor
Jana Paulová

Jana Paulová

1. GOLD ELIXIR REJUVENATING CAVIAR DAY CREAM SPF 10
restores and regenerates the cell structure of your skin and slows down the aging process. It smoothes deep wrinkles and increases skin elasticity.

Use: Apply in the mornings (evenings) on completely cleansed skin avoiding the area around the eyes. Spread evenly.

4148B, 50 ml

Hypoallergenic

2. GOLD ELIXIR REJUVENATING CAVIAR NIGHT CREAM
restores and regenerates the cell structure of your skin and slows down the aging process. It nourishes dry skin and helps restore the skin barrier.

Use: Apply in the evenings on perfectly cleansed skin avoiding the area around eyes. Spread evenly.

4149, 50 ml

Hypoallergenic

3. GOLD ELIXIR REJUVENATING EYE CARE
smoothes deep wrinkles around the eyes, firms the skin and helps restore the skin barrier.

Use: Apply in the mornings and evenings on a clean area around the eyes. Gently tap it into the skin from the outer to the inner corner.

4150, 15 ml

Hypoallergenic

4. GOLD ELIXIR MASK

This in-depth rejuvenating and regenerating mask with caviar extract restores the skin's cell structure and slows down the aging process.

Use: Apply in a sufficient layer on the face and neck and leave on for 15-20 minutes. Then remove with a damp cotton ball. Apply once or twice a week as needed.

5140A, 2x8 g

5. GOLD ELIXIR AROMATHERAPY

Rejuvenating Aromatherapy with caviar, essential oils and jasmine aroma makes your skin smooth and soft while lifting fine lines. If used regularly, it will make your tired and dry skin elastic, firm and velvety again. Argan oil, together with 10 other natural oils, nourishes and regenerates the skin.

Use: Apply several drops of oil onto your face and neck and gently massage. Use at night or as needed.

PRESERVATIVE-FREE. DERMATOLOGICALLY TESTED.

4169, 15 ml



CAVIAR EXTRACT contains lipids (for hydration and softness), proteins (for structural components of collagen and elastin & important for growth and tissue integrity), trace elements (PCa, Cu, Mn, Fe, Mg, etc. are important for normal cellular processes), and vitamins.



DAFFODIL BULB narcissus bulb extract increases your skin's elasticity, firms and even reduces deep wrinkles.



OMEGA 3 & 6 FATTY ACIDS nourish dry skin and help to renew your epidermis.



SHEA BUTTER promotes the formation of collagen and elastin, protects the skin against the physical effects of free radicals, soothes and regenerates the skin.



VITAMIN E has antioxidant effects and protects your skin against damage by free radicals.

NEW

PROBLEMATIC SKIN

GET RID OF ACNE!

Oily, shiny skin with enlarged pores, acne, blackheads and blemishes are the most typical signs of problematic skin. It is important to find a balance between the protective amount of sebum and its excessive formation. For proper cleansing and treatment of problematic acne-prone skin Dermacol has specially developed the ACNECLEAR line with Australian Tea Tree Oil and Zincidone®.



TEA TREE OIL contains more than 40 components which makes this ingredient so unique. It has antiseptic and disinfection effects, promotes blood circulation and cell renewal.



ZINCIDONE® regulates sebum formation and promotes skin regeneration

SKIN CLEANSING

ACNE clear
WITH TEA TREE OIL



1

st step



1. GOMMAGE CLEANSER

**Forget peeling!
Use gommage!**

This fine cleansing gel with Tea Tree Oil and special micro pearls is perfect for everyday removal of dead cells from the skin and for energizing. Fine micro pearls neither irritate nor damage the skin film.

**DERMATOLOGICALLY TESTED
FOR ALL SKIN TYPES
FRAGRANCE FREE**

5123, 100ml

2. ACNECLEAR ANTIBACTERIAL FACE WASH GEL

This antibacterial face gel with Tea Tree Oil and Zincidone® is designed for problematic acne prone skin. It removes impurities, visibly contracts pores, supports the skin regeneration and refreshes the skin.

4359A, 150 ml

3. ACNECLEAR CLEANSING GEL

Make-up removal & cleansing gel with Zincidone® and Australian Tea Tree Oil for problematic skin. It gently removes impurities, visibly contracts and cleans pores and leaves your skin perfectly clean and fresh, and supports the skin regeneration. It removes dead skin cells, softens your skin and has anti-septic effects.

4360, 200 ml



4.

4. ACNECLEAR CALMING LOTION

This cleansing lotion with Tea Tree extracts and Zincidone® works effectively against spots, removes impurities and contracts your pores.

FRAGRANCE FREE

4353B, 200 ml

2

nd step



3rd step



1. ACNECLEAR MOISTURIZING GEL-CREAM

The special gel-cream with Zincidone® with non-greasy formula is perfect care for day and night usage for problematic, acne prone skin. Tea tree oil has anti-septic and disinfectant effects. It is not heavy on the skin, does not clog pores and leaves the skin soft and supple.

4352A, 50 ml



2. ACNECLEAR MASK

This astringent facial mask for oily, combination and acne-prone skin with a special clay component and blend of herbal extracts pleasantly cools your skin, soothes irritation and contracts skin pores. Zincidone® regulates the formation of excess sebum.

5142B, 2x8 g



3. ACNECOVER MATTIFYING POWDER

Prevents the formation of new pimples, absorbs excessive sebum and does not clog pores. The powder mattifies and evens out skin tone by smoothing away color imperfections, leaving you with a flawless, natural finish. It is easy to apply, thanks to the sponge applicator.

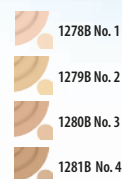
11g



4. ACNECOVER MAKE-UP & CORRECTOR

This make-up for problematic skin with perfecting corrector unifies the complexion and evens color imperfections. Thanks to Tea Tree Oil and Zincidone®, it has anti-bacterial and anti-septic effects, it doesn't clog the pores and reduces the sebum formation.

30 ml



2nd step
Foundation

1st step
Corrector



Detox & Defence

...daily detoxification and protection for your health and beautiful skin!

1. DETOXIFYING & DEFENCE MICELLAR LOTION

Completely cleanses, removes all impurities and make-up from your face, eyes and lips in just one step without having to excessively rub your skin. Aloe vera moisturizes and calms your skin. Cucumber extract refreshes and makes your skin softer.

Use: Apply in the morning and in the evening onto your skin using a cotton round. Do not rinse off.

SOAP-, ALCOHOL- AND PARABEN-FREE
FOR ALL SKIN TYPES
DERMATOLOGICALLY TESTED

4179, 200 ml

2. DETOXIFYING & DEFENCE FACE CREAM

The face cream with its light and easy-to-absorb texture rich in natural antioxidants, vitamins and stem cells neutralizes toxins and harmful substances from the environment, activates the restoration of damaged skin and creates a protective shield on your skin that protects it from the environment and regular sun exposure.

Use: Apply in the morning and evening onto completely cleansed skin.

SILICON-FREE - PARABEN-FREE
FOR ALL SKIN TYPES
DERMATOLOGICALLY TESTED

4126, 50 ml

3. DETOXIFYING & DEFENCE FACE MASK

Gel-cream mask with a texture rich in natural antioxidants, vitamin and stem cells penetrates deep into your skin where it neutralizes toxins and harmful substances from the environment. It activates the renewal of damaged skin and prevents premature aging of your skin, the loss of elasticity and the formation of wrinkles.

Use: Apply a sufficient amount onto your face, neck and décolletage, avoiding the area around your eyes. Leave on for 15-20 minutes and then remove the mask with a damp cotton round. Apply once to twice a week.

FOR ALL SKIN TYPES
DERMATOLOGICALLY TESTED

5153A, 2x8 g



DRY SKIN

Give delicate and dehydrated skin its softness!

Delicate skin with less visible pores, peeling skin, red blotches or skin that experiences a strong feeling of tightness after cleansing are the main signs of dry skin. It is necessary to apply an abundant dose of nutrients and water to create a protective layer against environmental factors and other signs of aging. After regular use of LADY LINE the skin is well hydrated, its elasticity is restored and it is smooth.

1. LADY CREAM

This intensive day care with rich texture soothes and provides maximum comfort for dry and very dry skin. The cream contains Panthenol and seaweed extracts, it regenerates and nourishes dry skin and help to regenerate skin cells.

4136E, 50 ml

Hypoallergenic

2. QUEEN NIGHT CREAM

This nourishing night cream with seaweed extracts and Vitamin E acts during the night, when your skin cells are renewed. It protects your skin against free radicals, increases your skin's ability to retain water, preventing it from drying out and helps to regenerate your skin.

4154E, 50 ml

Hypoallergenic

3. EYE CREAM CLASSIC

This nourishing cream with seaweed extracts firms your skin and helps to regenerate your skin's cells. It contains vitamin E and hyaluronic acid – a highly effective natural moisturizing substance, intensively hydrates the sensitive area around your eyes and assists in preventing the formation of wrinkles around your eyes.

4310E, 50 ml

Hypoallergenic

4. PRINCESS CREAM

This nourishing cream protects your skin against harsh environmental influences (changes in temperature, wind, air pollution) that make your skin even dryer and weaker. It contains Panthenol and seaweed extracts. The cream has a rich texture and provides immediate relief from the unpleasant feelings associated with dry, tight and irritated skin.

4147E, 50 ml

Hypoallergenic



KALPARIANE a brown seaweed extract with a high content of Omega 3 and 6 fatty acids reduces the effects of elastase and collagenase, thus helping to maintain your skin's firmness and suppleness.



VITAMIN E has antioxidant effects and protects your skin against damage by free radicals.



VITAMIN A promotes enzymatic activity and skin regeneration, strengthens epidermis

Give your skin a healthy glow!

Normal skin is an ideal skin type that is not very common. It needs moisturizing and everyday care. While the mixed skin is the most common skin type. The central part (T-zone) is more prone to the formation of skin impurities while the cheeks are drier and softer. This is caused by an uneven distribution of sebaceous glands. Your skin needs both moisturizing and special care to close the pores.

1. VITAL BALANCE CREAM

This softening facial cream with an easily absorbable texture is enriched with Shea Butter and apricot seed oil to perfectly address the needs of normal and mixed skin. Hyaluronic acid provides intense moisturizing and vitamin E naturally protects the skin against adverse environmental effects and regenerates it.

4059A, 50 ml

DERMATOLOGICALLY TESTED
PARABEN FREE

2. CLEANSING FACE MILK

This mild cleansing milk is specially developed for needs of normal and combination skin. It completely removes any traces of impurities and make-up from your skin while treating it at the same time. It contains allantoin, D-panthenol and vitamin E which maintain the optimum level of skin hydration and protect it from free radicals.

4069B, 200 ml

Hypoallergenic

3. CLEANSING FACE TONIC

This calming cleansing face tonic is specially developed for needs of normal and combination skin. It cleanses, tonifies and refines at the same time. It contains cucumber extract and hyaluronic acid which has excellent astringent and hydrating effects.

4068B, 200 ml

Hypoallergenic

4. CALMING EYE MAKE-UP REMOVER

The calming eye make-up remover with green tea extract effectively and gently removes make-up from the sensitive area around your eyes. This fine lotion with D-panthenol moisturizes the skin around your eyes without drying it out.

4079, 125 ml

5. WATERPROOF EYE MAKE-UP REMOVER

This gentle eye make-up remover removes all eye make-up including waterproof. It softens the skin without drying it out.

2606A, 120 ml



CUCUMBER EXTRACT has cleansing, moisturising, relaxing, refreshing, cooling, regenerating and soothing properties. Thanks to carbohydrates the cucumber extract prevents massive water loss and reduce dehydration, thus providing moisturizing, refreshing and soothing action on the skin. Due to vitamins and minerals the cucumber juice has stimulating and revitalizing properties.



GREEN TEA EXTRACT contains tannins, which are well known due its anti-microbial, anti-inflammatory, and radical scavenging characteristics. Green tea has stimulant, lipolytic and antioxidant properties. Used in cosmetic for tired skin.



HYALURONIC ACID provides significant hydration effects (it is not absorbed into the skin, but creates a thin film on the surface that has the ability to bind large quantities of water from the air).



VITAMIN E has antioxidants effects and protects your skin against damage by free radicals.



PANTHENOL has calming, regenerating and moisturizing effects.

Balance your skin!

Sensitive skin is characterized by redness, swelling, it negatively responds to smoky environment, light, cold or stress. It shows symptoms such as itching, burning and increased tension. Therefore Dermacol laboratory developed special SENSITIVE care that provide advanced care that returns natural balance and restores the skin immunity as well as protects and moisturizes.

1. SENSITIVE CALMING CREAM

This nourishing day & night cream with a rich texture and a highly protective effect was formulated for sensitive skin. The olive extract and presence of vitamin E reinforce and restore your skin, keeping it optimally moisturized. Seaweed extracts and Shea Butter slow down the ageing process, protect your skin against free radicals and calm irritated skin. **Specially tested for the needs of sensitive skin.**

**DERMATOLOGICALLY TESTED
PARABEN FREE**

4060, 50 ml



2. SENSITIVE CALMING TONER

This calming toner for sensitive skin and fragile skin contains olive extracts. It effectively completes your skin's cleansing, while at the same time moisturizing it and boosting its resilience. D-panthenol and olive oil soothe and moisturize your skin and create a protective film.

4070B, 200 ml

Hypoallergenic

Paraben free

3. SENSITIVE CLEANSING MILK

This gentle cleansing milk for sensitive skin and fragile skin contains olive extracts. It gently removes make-up and any impurities. It calms and softens your skin and boosts its environmental resistance. An oat flake extract, D-panthenol and olive oil soothe, nourish and moisturize your skin.

4071A, 200 ml

Hypoallergenic

Paraben free

4. SENSITIVE EYE MAKE-UP REMOVER

The gentle and efficient fragrance-free eye make-up remover has been specially designed to remove make-up and impurities from the sensitive area around your eyes. Cornflower extracts prevent irritation, and D-panthenol and olive oil calm and moisturize your skin without unnecessarily drying it out.

OPHTHALMOLOGICALLY TESTED

4063, 125 ml



SEA MAYWEED® plant extract, which relieves symptoms of skin aging, reduces wrinkles and fine lines. Relaxes and nourishes skin, protects it from damaging by free radicals, evens out skin tone.



ANTILEUKINE 6 brown seaweed extract, positively affects premature skin aging, reduces inflammation, protects DNA from damage and maintains natural hydro-lipid skin balance.



SHEA BUTTER very popular natural substance in cosmetics, derived from the shea nut tree, perfectly moisturizes, soothes and regenerates skin.



VITAMIN E has strong antioxidant properties manifested in the ability to stabilize the natural skin barrier, to improve skin relief and increase skin enzymatic activity.



MARIGOLD AND OLIVE OIL effectively treat and rejuvenate dry and cracked skin, soothe irritations, soften and protect skin. Perfect for delicate and sensitive skin treatment.

The basic need of every skin is *HYDRATING!*

Good skin hydration is a key factor in skin defense against first signs of aging, which is due to a lack of water may appear too soon. Moisturizing cosmetic products are recommended to be used for their general beneficial effects in terms of increasing and improvement of protective functions of the skin. Water helps to regenerate skin and support cells structures.

1. **AQUA BEAUTY**

This moisturizing gel-cream with the AQUAXYL™ complex and hyaluronic acid optimizes the water content in your skin and prevents desiccation. Its light-weight texture optimizes the moisture balance in your skin and slows down the aging process. Seaweed extracts, vitamins and natural oils restore your skin's elasticity, regenerate it and protect it against adverse environmental effects.

**DERMATOLOGICALLY TESTED
PARABEN FREE**

4009, 50 ml



Give your skin maximum moisture
and hydration with moisturizing creams
Juicy & Beauty!

JUICY & BEAUTY

Facial creams refresh your skin and improve its elasticity. Vitamin E has anti-inflammatory properties and prevents free radicals from damaging the skin. Shea butter supports skin protection against UV rays, hydrates and regenerates.

**Juicy & Beauty creams are
selected in 2 variations:**

1. **Mango & Fig**
with fig extract and mango scent
4006A, 50 ml
2. **Japanese Cherry**
with a blossom extract
4007A, 50 ml



8 IN 1 | MULTI-ACTIVE BEAUTY BENEFIT GLOW

3. **BB WASH CREAM**

Multi-active cream wash for daily make-up removal and cleansing for delicate female skin. Rich creamy texture easily lathers up, completely removes all impurities, make-up (including eye make-up) and dead skin cells. BB cream wash has moisturizing, calming and regenerative effects. It leaves your skin soft, fresh, bright and healthier and restores its flexibility.

**DERMATOLOGICALLY TESTED
FOR ALL SKIN TYPES**

5149, 100 ml

Care for your skin now, it will pay off later

Young skin needs effective and gentle care that visibly reduces shine and prevents bacteria formation in order to be clean and beautiful. It requires protection, regular care and good make-up removal habits. PERFECT LINE with a moisturizing complex prevents dehydration, increases elasticity, eliminates signs of fatigue and refreshes the skin. The overall effect is a natural-looking and better protected skin.



1. PERFECT BASE CREAM

This subtly perfumed cream with seaweed extracts is suitable for day and night skin care and is perfect as a base for foundation. It eliminates the signs of fatigue, revitalizes the complexion and increases skin's elasticity.

4347B, 50 ml

2. PERFECT CLEANSER 2in1

This make-up removing and cleansing lotion for young skin efficiently removes make-up (even water-resistant types) and impurities. It gently cleanses and removes the make-up from your face while tonifying your skin. Cucumber and seaweed extracts protect and moisturize your skin, while providing it with a fresh and soft look.

4076A, 200 ml

3. PERFECT CLEANSER 3in1

This face-washing gel easily and quickly removes make-up and other impurities from your skin while tonifying it at the same time. Seaweed and cucumber extracts refresh and hydrate the skin.

5118, 100 ml

SPECIAL CARE

1. EYE GOLD GEL

This gel with herbal ingredients regenerates and immediately refreshes the eye area while providing a triple effect against swelling, fatigue and dark circles.

FOR ALL SKIN TYPES

4316B, 15 ml



Rejuvenating and mattifying care

...awakens the
fresh beauty
of your skin!

1. LIFT & MATT DAY CREAM

A moisturizing LIFT & MATT CREAM has long-term mattifying effects and visibly reduces your skin's imperfections. It reduces the size of your pores and skin shine and decreases the creation of sebum. It restores a youthful look to your skin, leaving your skin mattified all day long.

SILICONE AND PARABEN-FREE

4061, 50 ml

2. LIFT & MATT NIGHT CREAM

A nourishing LIFT & MATT CREAM supports actual skin regeneration at night by providing long-term moisturizing and mattifying. It regulates sebum formation, supports skin cell renewal and reduces the size of your pores and skin shine formation.

SILICONE AND PARABEN-FREE

4062, 50 ml



„A STRATEGY FOR A PERFECT LOOKING BODY“

An unhealthy lifestyle & diet, dehydration, lack of exercise and uninformed choice of cosmetic products are the causes of the most common skin problems resulting in loss of firmness and elasticity, visible fatigue, cellulite, increased fat cell deposits, weight gain etc.

The ENJA line is designed for the individual needs of a women's body. Each product contains a balanced mixture of active ingredients (mainly seaweed extracts) that complement each other by working in the deep layers of the skin's tissue and enhance its effectiveness.

Don't forget that an essential element in the fight against cellulite or to get your body back into shape is to drink plenty of water (which means to drink at least 3 liters of water per day). Exercise is no less important!

ENJA BALSAM

ANTI-CELLULITE & ANTI-STRETCH MARKS

The balanced complex of active substances contained in the product restricts the formation of striae-strips and contributes to reduce the occurrence of cellulite. Regular use improves blood circulation and regenerates tired skin, reduces cellulite and prevents the appearance of stretch marks.

Use: Massage using circular motions twice a day (morning and evening) for a period of 12 weeks.

Hypoallergenic

53198, 200 ml



Recommendation for pregnant women:

During pregnancy we recommend using Enja balsam mainly on hips, buttocks, stomach, shoulders and chest, from the 3rd month of pregnancy till the 3rd month after delivery.

ENJA SLIMMING & ANTI-CELLULITE CARE

A BEAUTIFUL AND SLIM BODY WITHOUT CELLULITE

The shape of your buttocks, hips and slim abdomen is what creates a beautiful silhouette. Unfortunately most of us are troubled by fat deposits in these areas. Therefore Dermacol developed very effective products for reshaping the problematic parts of your body.



An unhealthy life-style, liquid deficiency and lack of exercise are the main causes of cellulite. Dermacol Enja Night will very effectively help you to fight against undesirable orange-peel skin which appears mainly on the buttocks and hips. If used regularly, your skin becomes firmer and its orange-peel appearance is visibly reduced!



4. ENJA NIGHT

An absolute innovation in the fight against cellulite, specially developed to effectively act against fat storage throughout the night and to drain the accumulated water and toxic substances from tissues. Seaweed and horse chestnut extracts along with the caffeine reinforce fat breakdown, protect against the loss of collagen and elastin and thus effectively reduce cellulite.

Use: Apply to problematic areas each evening using circular strokes going from bottom-up.

44198, 150 ml

5. ENJA CRYO

This cooling spray with SYMFIT™ and caffeine complex very actively acts against cellulite and accelerates fat degradation.

Use: Apply onto problematic areas twice a day.

Result: This effective formula can reduce the size of fat cells by as much as 35% in just 10 days (proven in an ex-vivo study).

44411, 150 ml

1. ENJA SLIM-GEL ABDOMEN RESHAPING

The gel stimulates fat-splitting under the skin and prevents the storage of fat-pads. The effective substances perfuse the problematic parts of the body and drains away retained water, while hydrating the skin and restoring its elasticity.

Use: To enhance the slimming effect, massage with ENJA Slim-Gel twice a day for at least a month.

Result: Clinical studies by the National Health Institute in Prague confirm that Enja Slim-Gel Abdomen Reshaping slims up the parts of your stomach by one size in just one month!

4437A, 150 ml

2. ENJA LIFT-GEL FOR BUTTOCKS & HIPS

This gel with an effective lipo-reduction system is intended for slimming and reshaping your buttocks and hips. The active substances stimulate lipolysis and in the long term prevent fat from being stored in these problematic areas.

Use: To enhance the slimming effect, massage with Enja Lift-Gel twice a day for at least a month.

Result: Clinical studies by the National Health Institute in Prague confirm that Enja Lift-Gel for buttocks and hips slims up the buttocks and hips by one size in just one month!

4438A, 150 ml

3. ENJA SLIMMING BODY MILK

This intensive body milk with a slimming effect treats body parts affected by cellulite, reduces fat cells, moisturizes your body's skin and keeps it soft and supple.

Use: Apply the milk twice a day (in the morning and evening) on problematic areas.

Result: Clinical studies of the National Health Institute in Prague confirm that Enja Slimming Body milk slims up the problematic parts by approx. 3,1 cm on average within 28 days!

5321C, 200 ml

ENJA

FIRMING

FIRM THE CURVES OF YOUR BODY!

An unhealthy lifestyle, especially insufficient liquid intake and a lack of exercise, affect the skin's elasticity and make the skin slack and loose. The special ENJA firming products help you to restore your skin's strength and its original condition.

1. ENJA FIRMING BODY BALM

An effective combination of coenzyme Q10, creatine and extract of grape seeds protects and strengthens collagen and elastin fibres, reduces the signs of orange-peel skin and slows down the aging process. Enja Firming Body balm intensively firms and visibly improves the skin's elasticity.

Use: Apply using circular motions until it is fully absorbed.

4424B, 400 ml

2. ENJA FIRMING SHOWER GEL

This gel pleasantly washes and hydrates your skin. Ginseng extract and ginger aroma enhance the skin's metabolism and therefore improve its elasticity. Cooling menthol stimulates your mind and gives you a fresh feeling.

4439, 200 ml

3. ENJA FIRMING BODY OIL Q10

This firming body oil with coenzyme Q10 restores your energy and increases your skin's elasticity. The caring texture with natural olive and avocado oils intensively nourishes, regenerates and protects your skin from drying out. It helps to prevent stretch marks and skin slacking during pregnancy and reduction diets.

Use: Apply using circular motions onto problematic areas twice a day.

4442, 150 ml

4. ENJA PUSH-UP

This bust-firming cream effectively firms the skin of your bust and décolleté, restores your skin's elasticity and prevents loosening of the skin. Thanks to the green seaweed, extracts of oak tree, elder and tropical almond-tree your breast and lower neck will be firmed.

Use: Massage thoroughly on your bust and décolleté. The cream is well absorbed. Apply 1-2 a day.

4412B, 75 ml

Hypoallergenic



AROMA RITUAL

Do you want to treat your body with something special?

Distinct pleasure in the comfort of your home:

- forget about your surroundings and all your worries
- treat yourself to spa magic in the comfort of your home
- pamper your body and soul with the AROMA RITUAL

FRUITY

AROMA RITUAL BODY SCRUBS

Refreshing sugar body scrub Fresh watermelon, juicy scrub Rhubarb & Strawberry and anti-stress sugar scrub Grape and lime with micro particles effectively remove dead skin cells, clean your body's skin, moisturize it and make it smooth without irritating or damaging the skin film. Body scrubs leave your skin velvety soft and shiny and pleasantly fragranced with sweet scents of fresh fruit. The fresh scents refresh your body and mind and cheer you up.

1. 4046 - 200 g 2. 4047 - 200 g 3. 4108 - 300 g



NEW

RELAXING *with sweet scent of pineapple and coconut*

This shower gel and body lotion with coconut oil leave your skin completely clean and pleasantly soft. The sweet smell of pineapple and coconut evokes the feeling of relaxation, awakens your imagination and transfers you to a tropical paradise.

4. 4101 - 250ml

5. 4103 - 200ml



Stimulating

Vitalising

AROMA RITUAL SHOWER GELS

Awakening shower gel Sweet mango, Delicious shower gel with aroma of Irish coffee, Stimulating shower gel with lemon extract and Vitalising shower gel with mandarin oil leave your body's skin relaxed, soft and perfectly clean.

6. 4110 - 250 ml

7. 4109 - 250 ml

8. 4106 - 250 ml

9. 4104 - 250 ml



Delicious

Awakening

2.

3.

4.



ANTI-STRESS with grape and lime scent

The stress-relief hand cream, shower gel, body lotion and oil with grape seed oil and lime scent relieves any built-up stress and calms your body and mind after a difficult day. They help skin regeneration, moisturize it and make it softer.

- 1. 4376 - 100 ml
- 2. 4040A - 250 ml
- 3. 4042 - 200 ml
- 4. 4049 - 50 ml

7.

8.



REFRESHING with sweet watermelon scent

The sweet shower gel and body lotion with melon extract moisturizes your skin and makes the tired skin smooth and refreshed. The sweet watermelon scent clears your mind and enhances regeneration.

- 5. 4041 - 250 ml
- 6. 4043 - 200 ml

JUICY with fresh scent of rhubarb and strawberries

This juicy shower gel and body lotion with fresh rhubarb aroma and strawberry extract provide optimum moisturizing to your skin and leave it velvety soft.

- 7. 4105 - 250 ml
- 8. 4107 - 200 ml



10.

11.



ENERGIZING with cherry blossom extracts

This aromatic shower gel, body lotion and hand cream with cherry blossom extracts have energizing effects on both your body and mind and lifts your spirits.

- 9. 4378 - 100 ml
- 10. 4100A - 250 ml
- 11. 4102 - 200 ml

14.

15.

HARMONIZING with chocolate and orange fragrances

The tasty shower gel, body lotion, scrub and hand cream with chocolate and orange aroma leaves a sweet fragrance and a pleasant supple feeling on your skin. Orange oil refreshes your mind, boosts your spirits, eliminates tension and soothes your soul.

- 12. 4377 - 100 ml
- 13. 4045 - 150 ml
- 14. 4029B - 250 ml
- 15. 4033 - 200 ml





These **water-resistant** sun care products for a healthy, beautiful and even suntan with **beta-carotene** provide efficient protection against the sun. Protective **UVA** and **UVB filters** with **vitamin E** and grape seed oil prevent skin damage caused by UV radiation and protect it against premature aging.



1. WATER-RESISTANT TINTED SUN PROTECTION FLUID SPF 50

It provides high protection from sun-exposure, while moisturizing your skin, evening your skin tone and covering any imperfections.
5464 – 50 ml

2. WATER-RESISTANT SUN CREAM SPF 50

Sun body cream calms and prevents skin irritations and supports its regeneration.
E5471 – 50 ml

3. SUN CREAM & LIP BALM SPF 30

Water Resistant facial sun cream and lip balm protects your skin and lips from the sun and cold.

5463 – 30ml/3,2ml

4., 5., 6. WATER RESISTANT SUN MILK

Sun milk protects your skin and supports its moisturizing. Practical spray allows for fast and easy application.

5466 – 200 ml, 5467 – 200 ml, 5468 – 200 ml

7. WATER RESISTANT SUN MILK SPF 20

Sun milk protects your skin, makes it softer and supports moisturizing.

5469 – 200ml

8. WATER RESISTANT SUN MILK FOR KIDS SPF 30

Sun milk protects the skin against sun burn and damage. It is suitable for children's delicate skin.

5470 – 200ml



These **after-sun** products for beautifully tanned, bronze and moisturized **skin efficiently regenerate**, sooth and moisturize your skin after sunbathing. They help protect its **youthful look** and make it **feel softer**.



1. AFTER SUN HYDRATING & COOLING GEL
After-sun gel with D-panthenol, glycerin and menthol.
5473 – 150 ml

2. AFTER SUN REGENERATION & HYDRATING BALM
After-sun balm with D-panthenol, beta-carotene and almond oil.
5472 – 200 ml

3. BETA-CAROTENE BODY MILK
The beta-carotene body milk prolongs your sun-tan and slows down skin peeling. It contains herbal extracts and vitamins A and E that help regenerate your skin and soothe any irritation.
5458B – 200 ml

4. AFTER SUN SHOWER GEL
This fine shower gel with beta-carotene and walnut oil provides your tanned skin with perfect care, supports its natural protective properties and makes your tan stable and last longer.
5474 – 250 ml

For **beautifully tanned skin** without tanning in the sun.



5. SELF-TAN BODY MILK
The self-tanning lotion scented with chocolate and orange provides your skin with a natural tan appearance without sun exposure. Your skin will have a natural and even suntan appearance within 6 hours after application. This product does not protect against UV radiation. 5462A – 200 ml

6. SOLAR INTENSE BODY BRONZE ACCELERATOR
This suntan promoting and accelerating body milk with avocado oil and vitamin E intensifies production of pigmentation and prolongs the tan. It softens and regenerates the skin, prevents it from premature aging.
Use: Apply prior using a solarium. Shake well before use. 5450B – 200 ml



FOOT CARE

Your legs dream about receiving the perfect care!

Do you have tired and swollen legs? Dermacol foot care products offer effective and targeted help. Care for your legs and they will look great, smooth and soft!

1. FRESH SHOES SPRAY

This Fresh Shoes Spray provides 24-hour protection from an unpleasant odor. It intensively eliminates the odor of sweating feet and its fresh scent refreshes your skin and makes your shoes pleasantly fragrant.

5216, 130 ml

2. SOFT HEEL BALM

This balm efficiently regenerates the skin of your feet and moisturizes. Salicylic acid protects from the formation of rough skin on your heels and eliminates itching.

5215, 100 ml

3. HAPPY FEET CREAM

Feet cream with olive oil and vitamin E softens and nourishes your feet's stressed skin. It efficiently increases your skin's elasticity, supports regeneration and moisturizes it.

5214, 100 ml



Soft hands & beautiful nails

Treated hands and neat nails make every woman look beautiful and unmercifully show your age and how much you care about yourself. Exclusive Dermacol hand creams offer an easy, effective and efficient solution for your hands and nails and help care for the exposed skin on your hands, preventing its cracking.

4. AROMA TIME

This exclusive hand and nail cream contains a scent of cinnamon and mandarins. Enriched with vitamin E and D – panthenol, it nourishes your hand's skin and helps strengthen your nails.

4366B, 100 ml

5. BEAUTIFUL HANDS

This moisturizing hand and nail cream contains vitamin E and panthenol.

4368A, 100 ml

6. GOLD ELIXIR

This rejuvenating and regenerating care for hands and nails with caviar extract restores your skin's structure and slows down the aging process.

4151A, 75 ml

7. ONE COAT EXTREME COVERAGE NAIL POLISH

Collection of 27 trendy colors with a high coverage effect will make your nails look well manicured. The nail polish dries in 120 seconds.

2370-2914, 10 ml

8. BASE COAT

Smoothes and treats the nail surface, prepares for the color application.

2398, 10 ml

9. UV TOP COAT

It creates a glossy and protective film, prevents fading of color paint.

2399, 10 ml

10. RAPID DRY

Only 1 drop and your nail polish will be dry withing 45 seconds!

2369, 10 ml



2370	2372	2374	2385	2388	2390	2900
2371	2373	2384	2386	2389	2392	2901
2902	2903	2904	2905	2906	2907	2908
2909	2910	2911	2912	2913	2914	

